



---

## **Product Instruction**

### **Drew3 Control Assay Data File Internet Download and Installation Instructions**

#### **Purpose:**

This document provides instructions for the Internet download and installation of the Drew3 Quality Control Assay Data file into the Drew3 Hematology Analyzer.

#### **Tools Required:**

Computer with Internet access and USB port.

- USB Thumb Drive. (Supplied with Drew3, 1Gig or less)

**Read this entire document before proceeding**

#### **Overview:**

The task of entering Drew3 Control Assay Targets and Ranges by use of the Drew Scientific Website and Thumb Drive can be accomplished in three easy steps. The use of the Control Data File and Thumb Drive greatly simplifies the data entry process and prevents inadvertent mistakes which frequently occur during manual assay input. These steps are as follows:

- Download Control Assay File from [www.Drew-Scientific.com](http://www.Drew-Scientific.com) and unzip file to Thumb Drive.
  - Execute install program found on Thumb Drive using Windows "My Computer".
  - Install Thumb Drive in to the Drew3 and Load Assay files into QC Menu.

Note: This document will provide instruction on this process from the point of view of using Microsoft Windows XP and Windows Internet Explorer. Minor variations to the process will be found when using other versions of Microsoft Windows and Internet browsers, but if the process is understood these minor variations can be quickly overcome.

#### **USB Thumb Drive Formatting:**

Formatting of the Drew3 Thumb Drive is required only one time. This is done by the Drew Scientific Installation Technician during the setup process and only is required to be repeated if the Thumb Drive is replaced.

#### **Instructions:**

- Log in to Drew3
- Insert the Thumb Drive into the USB port located in the front panel of the Drew3.
- From the Main Menu, Select "Auxiliary", then "USB Key Format".
- Select "Yes" from pop up window asking, "Do you confirm?"

NOTE: The light on the Thumb Drive will extinguish when the format is complete.

- Remove USB Thumb Drive from Drew3.

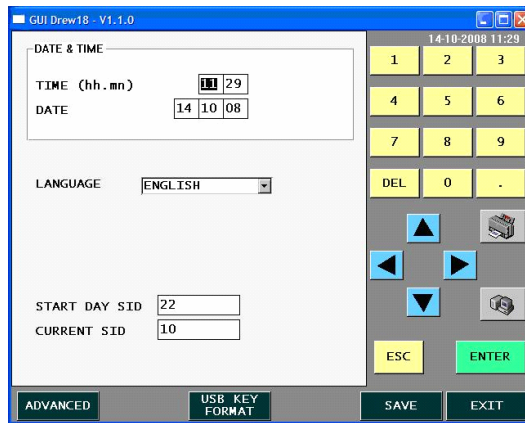


Fig 1: Auxiliary Menu - USB Format

### Download Control Assay File:

To download the control assay file to the Drew3 Thumb Drive, you will require access to a computer with Internet access.

Instructions:

- Insert USB Thumb Drive into any available USB port found on the computer with Internet access.

Note: After inserting Thumb Drive, Windows should display a pop up saying that “New Hardware Found”.

- Open Windows Internet Explorer and navigate to [www.drew-scientific.com](http://www.drew-scientific.com).
- Click the Products tab, followed by Consumables tab, followed by the Hematology tab, followed by Control & Calibration tab.

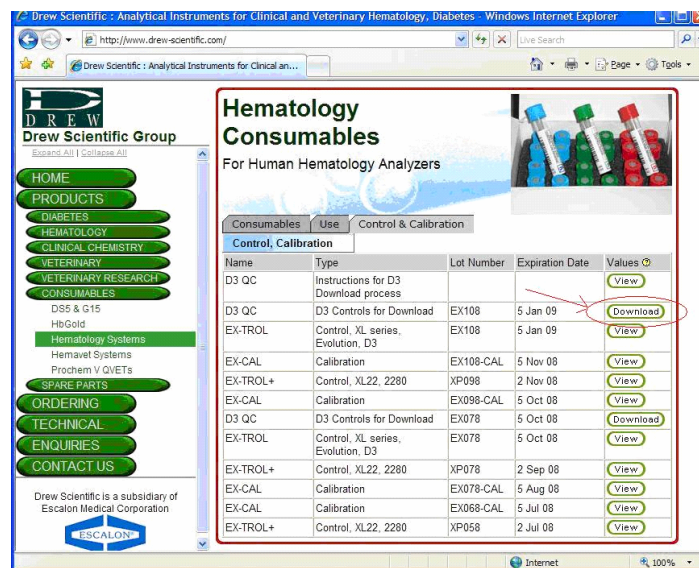


Fig 2: Downloadable Control Assay file found at [www.drew-scientific.com](http://www.drew-scientific.com)

- Identify the Download Icon for the current Lot Number of Control Product. This will be identified by name as D3 QC, Type as D3 Controls for Download.
- Using the mouse to select, Left-click the “Download” Icon once.
- A Windows Dialogue will pop up asking if you wish to Run, Save, or Cancel this file. Select “Run”.
- A Windows Security Dialogue will pop up saying that “Publisher could not be verified, do you wish to proceed?”. Select “Run”.



Fig 3: Select "Run" after selecting the Download Icon for Drew 3 Control assay



Fig 4: Select "Run" at security warning

Note: You now need to place the file being downloaded into the root of the USB Thumb Drive. Most computers will identify the Thumb Drive as Drive:E, however this is dependant upon the local computers configuration. Check your computer to verify the identification when the Drew 3 USB Thumb Drive is inserted.

- A Windows Dialogue will pop up asking what action and what location you would like to Run the file too.
- Using the "Browse" feature of the pop up, select the USB root directory.
- Select "UnZip"
- A Windows Dialogue will pop up saying, "5 files successfully unzipped".

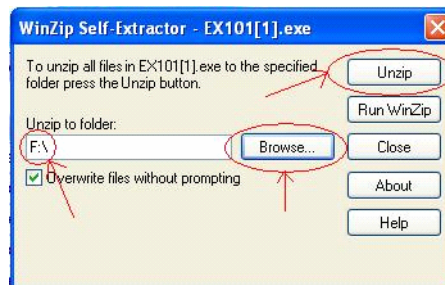


Fig 5: Use the Browse feature to point to USB "Root", then "Unzip".

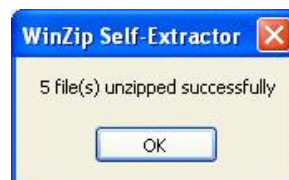


Fig 6: Unzipped files successfully completed to USB

- You are now finished with using Windows Internet Explorer.
- Close Internet Explorer.

**Execute install program found on Thumb Drive:**

The files unzipped to the “root” of the Drew3 USB Thumb Drive contain the control assay information as well as a Installation Program. This install program will locate the control assay files into a directory on the Thumb Drive the Drew 3 software will recognize.

Instructions:

- Open “My Computer”. This is typically found on the Windows Desktop.



Fig 7: Shortcut Icon to My Computer found on Desktop

Note: If the My Computer icon is not on the desktop, go to your Start tab on the Task Bar. My Computer will often be found directly on the Start Menu or under All Programs - Accessories.

- Using the Browse and/or Up key from My Computer, Select the Drew3 USB Thumb Drive or Removable Disk.

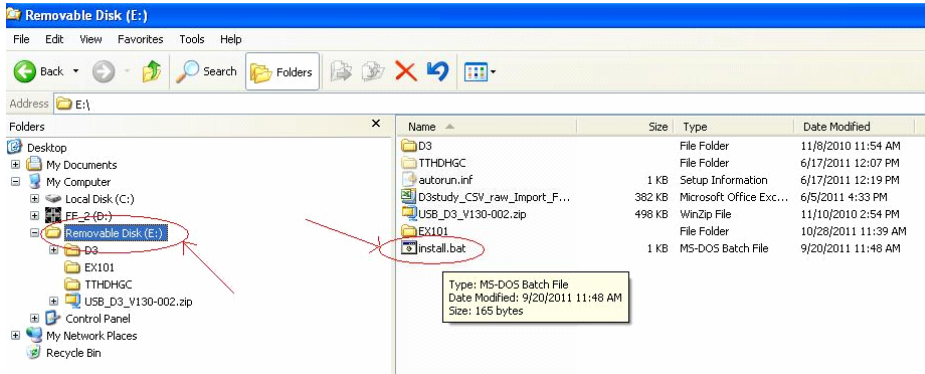


Fig 8: Using My Computer, Locate the Removable Drive and the Install file

- Using the mouse, Double Left-click the install.bat file.

Note: You will see a dialogue box appear and disappear very quickly. This was the install program running and relocating the files to the correct position

- Use of the computer is complete. Close My Computer and Remove Drew3 USB Thumb Drive.

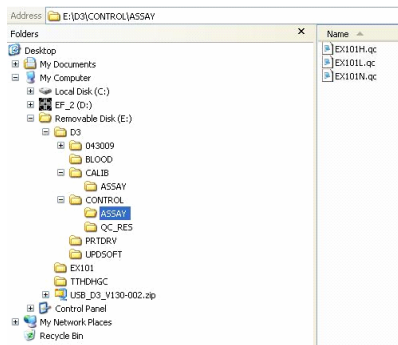


Fig 9: Upon completion of the install program, you can note the correct placement of files as above

## Load Assay files into QC Menu:

The final step is the uploading of the newly downloaded Drew3 Control Assay files into the Quality Control Menu of the Drew3.

Instructions:

Note: Operators Manual, version 1.0.6, Section 7.2 gives detailed instruction on entering control assay data. Refer to the section for more detailed information.

- Insert the Thumb Drive into the USB port located in the front panel of the Drew3.

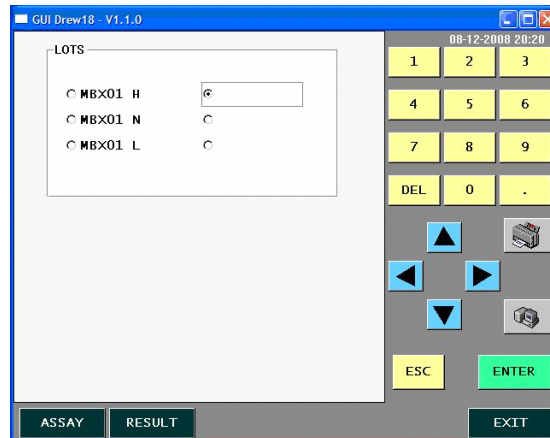


Fig 10: Select location for placement of new control assay values

- From the Main Menu of the Drew3, Select “Quality Control”.
- Select the location you wish to place the new control assay by “ticking” the appropriate tick box.
- Select “Assay”.
- Select “Load”.
- The Drew3 will now be displaying those Control Assay files found on the USB Thumb Drive.
- Select desired Control Assay file.
- Select “Save”. A Pop-up window will ask, “Do You Wish To Confirm?”. Select, “Yes”.
- Select “Exit”.
- Repeat two more times to upload the remaining Control Assay files into the Drew3.

## Procedure Complete

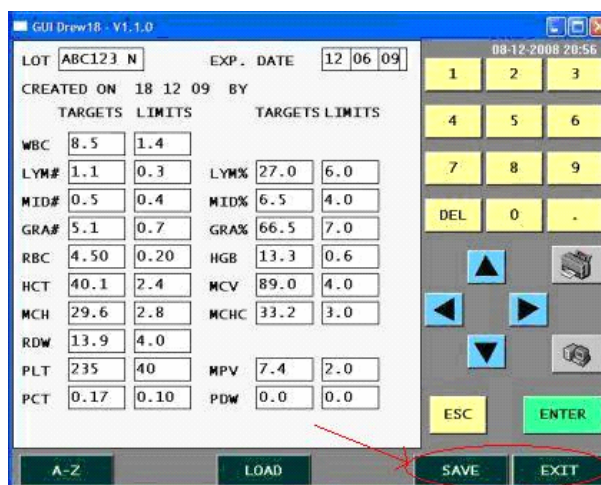


Fig 11: Load Control Assay from Thumb Drive. Save. Exit. Repeat for each control level.